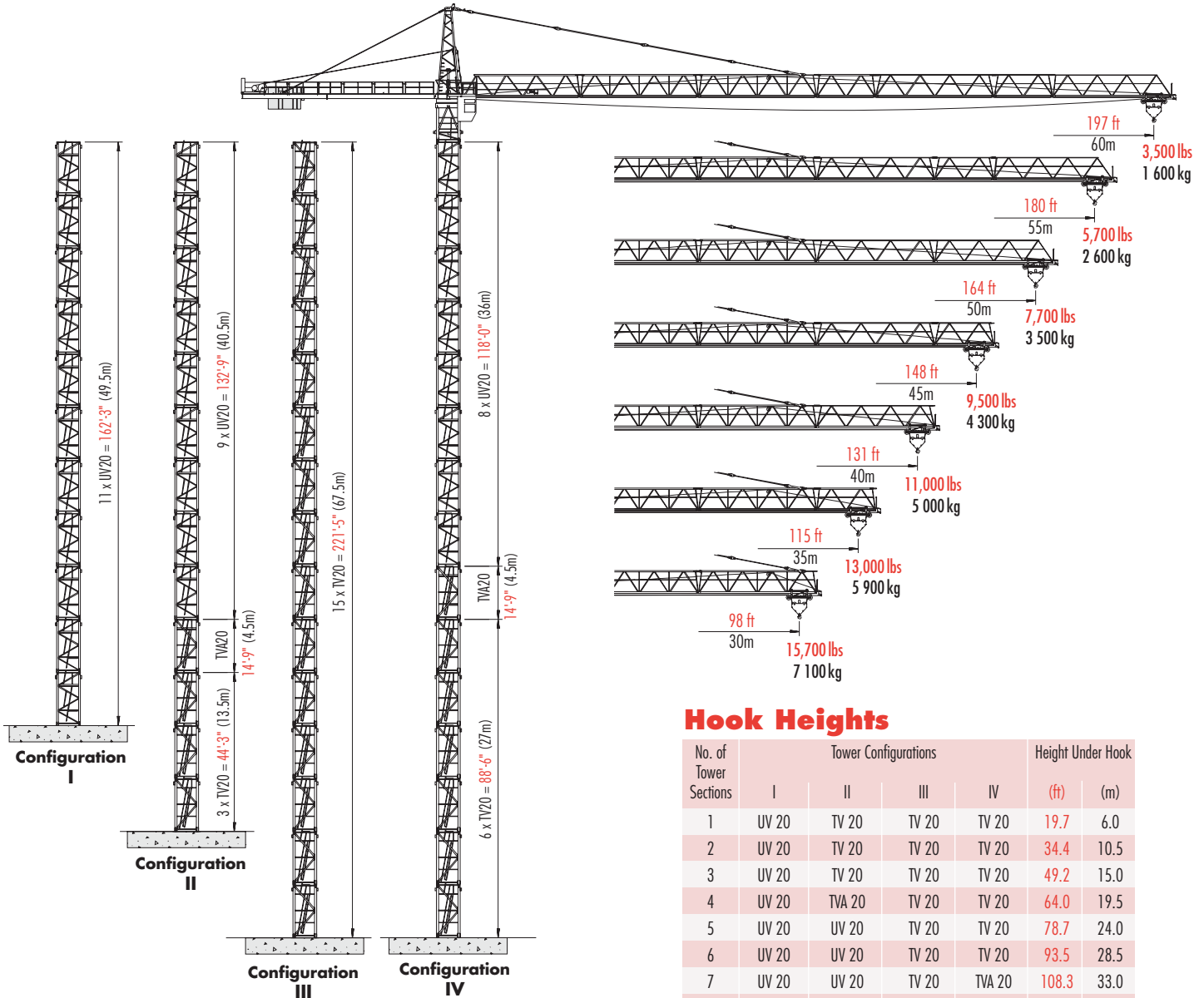


Wolffkran 226 SL

TOWER CRANE



FREESTANDING
(stationary)

* Lower top climbing unit to base of crane prior to operating crane at maximum hook height.

Other tower combinations possible, contact Morrow Equipment for additional information.

Hook Heights

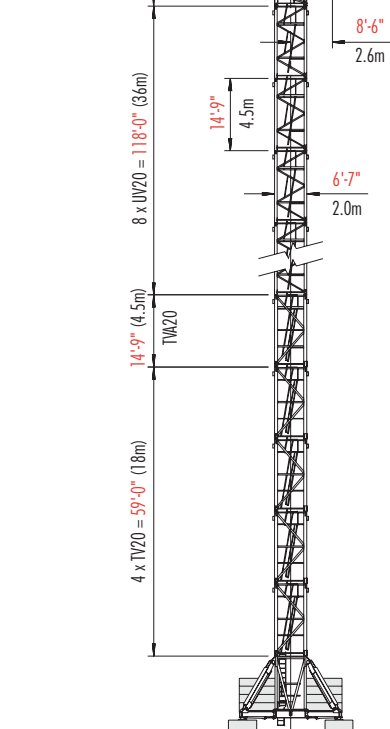
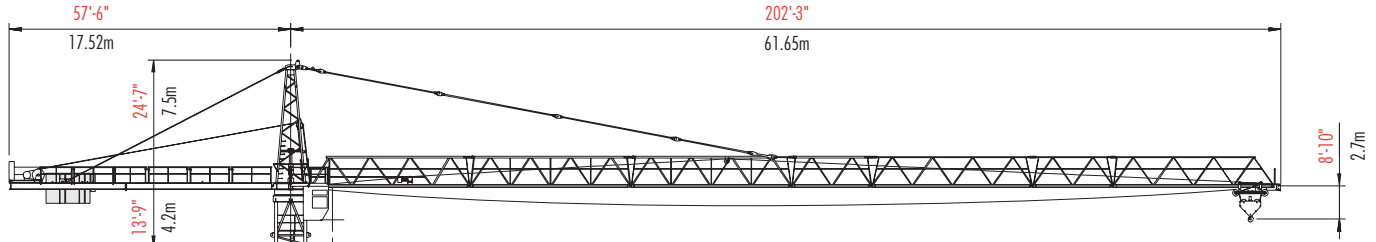
No. of Tower Sections	Tower Configurations				Height Under Hook	
	I	II	III	IV	(ft)	(m)
1	UV 20	TV 20	TV 20	TV 20	19.7	6.0
2	UV 20	TV 20	TV 20	TV 20	34.4	10.5
3	UV 20	TV 20	TV 20	TV 20	49.2	15.0
4	UV 20	TVA 20	TV 20	TV 20	64.0	19.5
5	UV 20	UV 20	TV 20	TV 20	78.7	24.0
6	UV 20	UV 20	TV 20	TV 20	93.5	28.5
7	UV 20	UV 20	TV 20	TVA 20	108.3	33.0
8	UV 20	UV 20	TV 20	UV 20	123.0	37.5
9	UV 20	UV 20	TV 20	UV 20	137.8	42.0
10	UV 20	UV 20	TV 20	UV 20	152.6	46.5
11	UV 20*	UV 20	TV 20	UV 20	167.3	51.0
12	—	UV 20	TV 20	UV 20	182.0	55.5
13	—	UV 20*	TV 20	UV 20	197.0	60.0
14	—	—	TV 20	UV 20	211.6	64.5
15	—	—	TV 20*	UV 20*	226.4	69.0



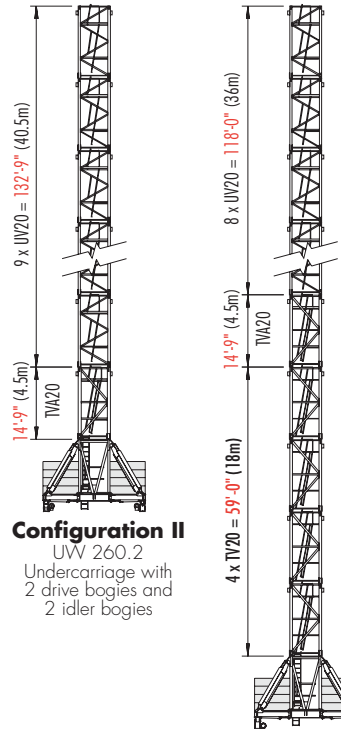
Morrow Equipment

Configurations

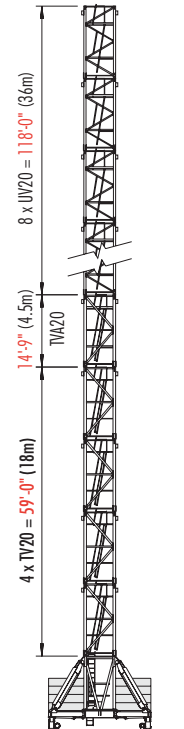
Wolffkran 226 SL



Configuration I
KRE 260.2
Cross Frame



Configuration II
UV 260.2
Undercarriage with
2 drive bogies and
2 idler bogies



Configuration III
UV 260.3
Undercarriage with
4 drive bogies

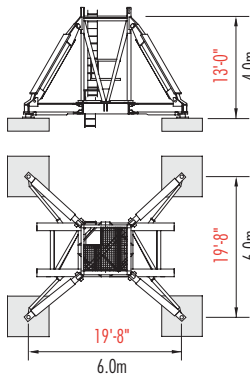
Hook Heights

No. of Tower Sections	Tower Configurations			Height Under Hook	
	I	II	III	ft	m
—	KRE 260.2	UV 260.2	UV 260.3	19.7	6.0
1	TV 20	TVA 20	TV 20	34.4	10.5
2	TV 20	UV 20	TV 20	49.2	15.0
3	TV 20	UV 20	TV 20	64.0	19.5
4	TV 20	UV 20	TV 20	78.7	24.0
5	TVA 20	UV 20	TVA 20	93.5	28.5
6	UV 20	UV 20	UV 20	108.3	33.0
7	UV 20	UV 20	UV 20	123.0	37.5
8	UV 20	UV 20	UV 20	137.8	42.0
9	UV 20	UV 20	UV 20	152.6	46.5
10	UV 20	UV 20*	UV 20	167.3	51.0
11	UV 20	—	UV 20	182.1	55.5
12	UV 20	—	UV 20	197.0	60.0
13	UV 20* ¹	—	UV 20* ¹	211.6	64.5

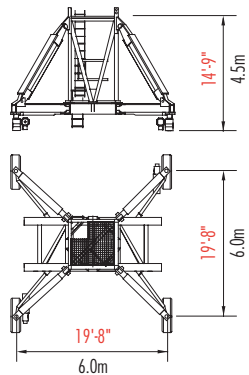
* Lower top climbing unit to base of crane prior to operating crane at maximum hook height.

¹ If the crane is erected with a 197-ft (60m) jib and on a KRE 260.2 or a UV 260.3, the maximum hook height is 197.0 ft (60m).

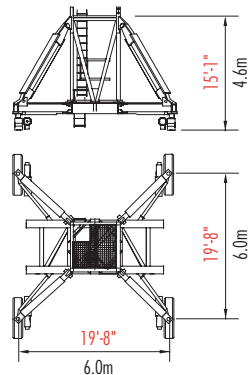
Other tower combinations are possible. Contact Morrow Equipment for additional information.



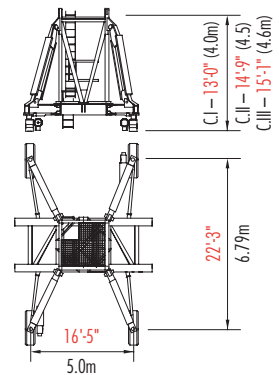
Configuration I
KRE 260.2 Cross Frame



Configuration II
UV 260.2 Undercarriage



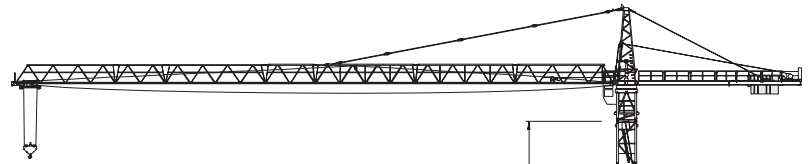
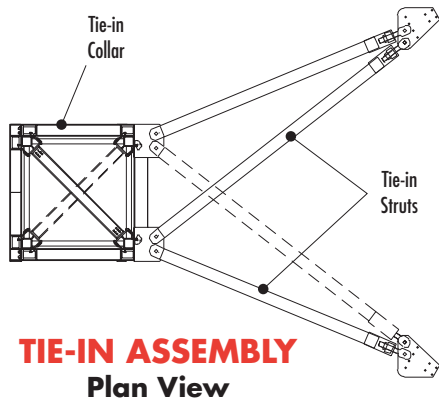
Configuration III
UV 260.3 Undercarriage



Alternate Configuration
for KRE 260.2, UV 260.2 & UV 260.3 available with restrictions. Contact Morrow Equipment for additional information.

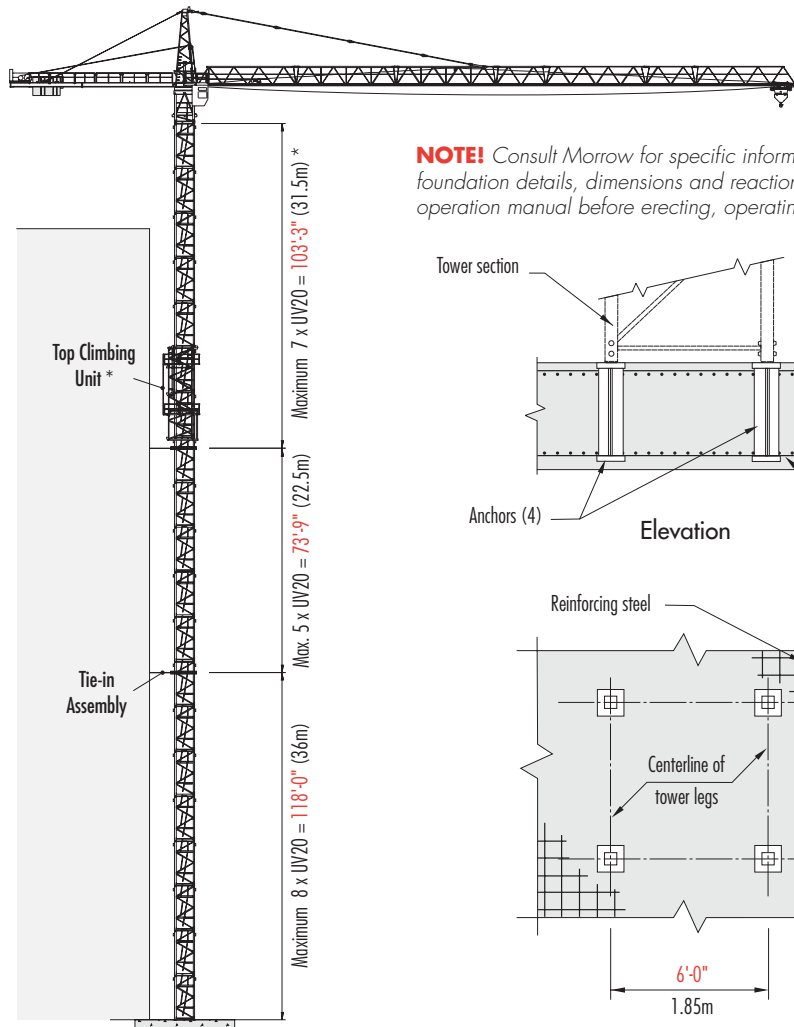
Configurations

Wolffkran 226 SL

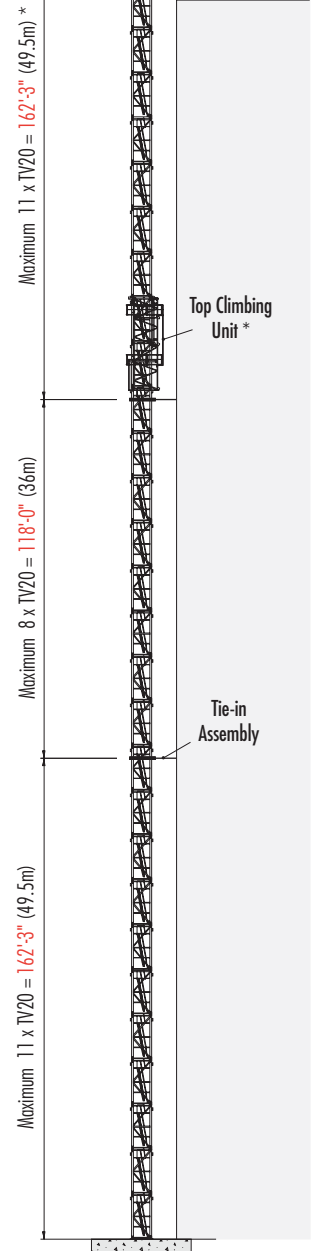
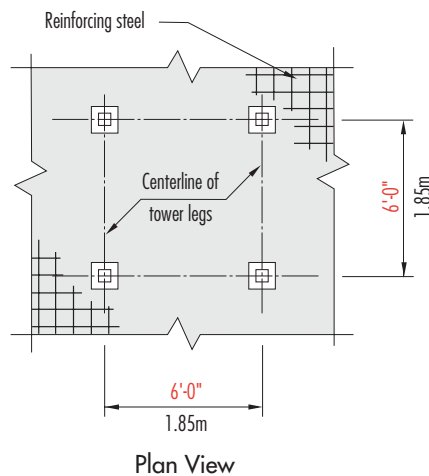
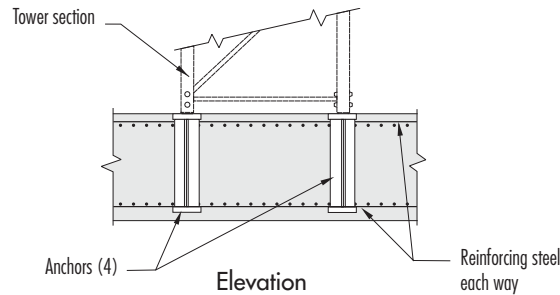


NOTE! If hook height exceeds 330 ft (100.0m), the number of tower sections above uppermost tie-in location **MUST** be reduced by 2 tower sections.

* Lower the top climbing unit to uppermost tie-in location prior to operating crane at maximum hook height.



NOTE! Consult Morrow for specific information regarding alternate foundation details, dimensions and reaction forces. Please refer to crane's operation manual before erecting, operating and dismantling crane.



TOP CLIMBING
with UV 20 Tower Sections
(Tied to Structure)

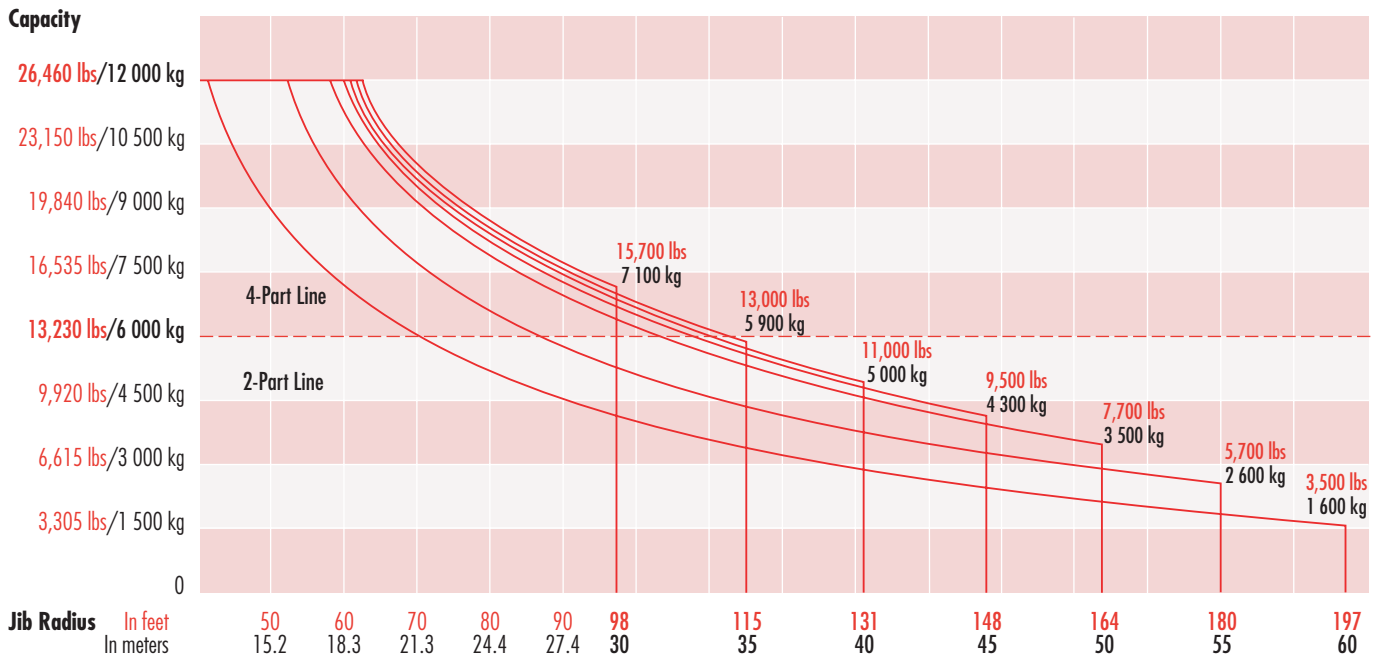
FOUNDATION
(Concrete Slab)

TOP CLIMBING
with TV 20 Tower Sections
(Tied to Structure)

Radius & Capacities

Wolffkran 226 SL

Hook Radius	4-Part Line		2-Part Line		ft	41	67	82	98	110	115	125	131	140	148	155	164	180	190	197	
	Max Capacity – Radius		Max Capacity – Radius		m	12.5	20	25	30	33.5	35	38.1	40	42.7	45	47.2	50	55	57.9	60	
197 ft 60m	26,460 lbs – 41 ft 12 000 kg – 12.5m	13,230 lbs – 78 ft 6 000 kg – 23.8m	lbs	26,460	15,740	12,015	9,590	8,200	7,805	7,010	6,505	5,995	5,490	5,200	4,695	4,100	3,705	3,500			
180 ft 55m	26,460 lbs – 52 ft 12 000 kg – 15.7m	13,230 lbs – 97 ft 6 000 kg – 29.6m	lbs	26,460	20,215	15,640	12,610	11,090	10,495	9,500	8,795	8,090	7,605	7,120	6,505	5,700					
164 ft 50m	26,460 lbs – 58 ft 12 000 kg – 17.7m	13,230 lbs – 108 ft 6 000 kg – 32.9m	lbs	26,460	22,760	18,080	14,595	12,700	12,105	11,000	10,295	9,500	8,795	8,335	7,700						
148 ft 45m	26,460 lbs – 61 ft 12 000 kg – 18.6m	13,230 lbs – 113 ft 6 000 kg – 34.4m	lbs	26,460	24,460	18,795	15,410	13,600	12,810	11,705	11,000	10,010	9,500								
131 ft 40m	26,460 lbs – 61.4 ft 12 000 kg – 18.7m	13,230 lbs – 113 ft 6 000 kg – 34.4m	lbs	26,460	24,825	19,510	15,500	13,690	12,895	12,220	11,000										
115 ft 35m	26,460 lbs – 61.7 ft 12 000 kg – 18.8m	13,230 lbs – 114 ft 6 000 kg – 34.7m	lbs	26,460	25,020	19,620	15,610	13,800	13,000												
98 ft 30m	26,460 lbs – 62 ft 12 000 kg – 18.9m	13,230 lbs – 98 ft 6 000 kg – 30m	lbs	26,460	25,145	19,710	15,700														



SPECIFICATIONS

Tower crane model WK 226 SL

Hoist Speed and Capacity

Hoist Unit	Hw 6 76 3	2-Part Line				
102 hp (76.0 kW) AC hoist unit 3-speed gearbox Remote-controlled gear shifting Eddy current brake		Gear	Capacity	Line Speed	Capacity	Line Speed
		1	13,230 lbs @	194 fpm	6 000 kg @	60 m/min
		2	8,820 lbs @	280 fpm	4 000 kg @	86 m/min
		3	4,410 lbs @	500 fpm	2 000 kg @	152 m/min
		4-Part Line				
		1	26,460 lbs @	97 fpm	12 000 kg @	30 m/min
		2	17,640 lbs @	140 fpm	8 000 kg @	43 m/min
		3	8,820 lbs @	250 fpm	4 000 kg @	76 m/min

Hoist Unit	Hw 6 86 3 S	2-Part Line				
138 hp (103.0 kW) AC hoist unit 3-speed gearbox Remote-controlled gear shifting Eddy current brake		Gear	Capacity	Line Speed	Capacity	Line Speed
		1	13,230 lbs @	220 fpm	6 000 kg @	68 m/min
		2	8,820 lbs @	310 fpm	4 000 kg @	94 m/min
		3	4,410 lbs @	550 fpm	2 000 kg @	168 m/min
		4-Part Line				
		1	26,460 lbs @	110 fpm	12 000 kg @	34 m/min
		2	17,640 lbs @	155 fpm	8 000 kg @	47 m/min
		3	8,820 lbs @	275 fpm	4 000 kg @	84 m/min

NOTE! Capacities and line speeds indicated will vary depending on the amount of hoist rope installed. This crane model may be equipped with a hoist unit other than that specified in data above. To verify, check the serial number of the crane and refer to the Wolkran 226 SL Operation Manual for additional information.

Motor Information

Drive Unit	Horsepower	Kilowatts	Speed	
Trolley (Tw 60 TSG)	9.4 hp	7.0 kW	79/156/315 fpm	24/48/96 m/min
Swing (Dw-FG)	2 x 8.8 hp	2 x 6.6 kW	0.9 rpm	
Rail Travel (UW 260.2)	2 x 8.8 hp	2 x 6.6 kW	98.5 fpm	30 m/min
Rail Travel (UW 260.3)	4 x 6.4 hp	4 x 4.8 kW	98.5 fpm	30 m/min


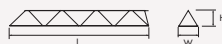

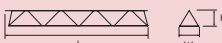

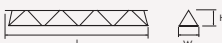

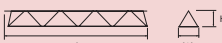
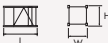


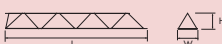



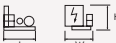



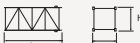
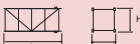
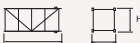







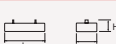



Power Requirements

480 Volts — 3-phase — 60-cycle — 200 Amperes service with **102 hp** (76 kW) or **138 hp** (103 kW) hoist unit

Specifications subject to change without notice. For other configurations and specifications, contact Morrow Equipment.

Component List

Wolffkran 226 SL

Description	Dimensions L x W x H	Weight	Description	Dimensions L x W x H	Weight
Turntable & Tower Top without Cab 	38'-3" x 7'-10" x 8'-3" 11.66m x 2.4m x 2.52m	22,125 lbs 10 035 kg	Jib Section ① 	33'-5" x 5'-7" x 7'-3" 10.18m x 1.69m x 2.22m	4,620 lbs 2 095 kg
Tower Top 	25'-7" x 6'-7" x 7'-3" 7.79m x 2.0m x 2.2m	6,060 lbs 2 750 kg	Jib Section ② 	33'-6" x 5'-4" x 6'-10" 10.2m x 1.63m x 2.08m	3,470 lbs 1 575 kg
Turntable with Slewing Motors 	16'-6" x 7'-10" x 8'-3" 5.03m x 2.4m x 2.52m	16,065 lbs 7 285 kg	Jib Section ③ 	33'-8" x 5'-4" x 6'-7" 10.26m x 1.63m x 2.0m	3,700 lbs 1 680 kg
Turntable Upper Part 1 	5'-7" x 7'-10" x 8'-3" 1.7m x 2.4m x 2.52m	9,585 lbs 4 350 kg	Jib Section ④ 	33'-8" x 5'-4" x 6'-4" 10.26m x 1.63m x 1.94m	3,140 lbs 1 425 kg
Turntable Lower Part 2 	10'-11" x 7'-2" x 8'-3" 3.34m x 2.18m x 2.52m	6,480 lbs 2 940 kg	Jib Section ⑤ 	17'-2" x 5'-4" x 6'-4" 5.22m x 1.63m x 1.94m	1,475 lbs 670 kg
Counterjib - Part 1 	30'-4" x 6'-0" x 1'-11" 9.25m x 1.84m x 0.58m	4 190 lbs 1 900 kg	Jib Section ⑥ 	33'-6" x 5'-4" x 6'-4" 10.2m x 1.63m x 1.94m	2,325 lbs 1 055 kg
Counterjib - Part 2 w/Fixed Counterweight 	23'-10" x 8'-0" x 2'-4" 7.27m x 2.44m x 0.71m	6,315 lbs 2 865 kg	Jib Section ⑦ 	17'-5" x 5'-4" x 6'-4" 5.32m x 1.63m x 1.94m	1,860 lbs 845 kg
Hoist Unit — Hw 6 76 3 (102 hp/76 kW) ³ 	7'-3" x 11'-0" x 4'-9" 2.22m x 3.35m x 1.46m	7,000 lbs 3 175 kg	Jib Assembly ⁴ 197-ft (60m) ①②③⑦④⑤⑥	198'-5" x 5'-7" x 7'-3" 60.5m x 1.69m x 2.22m	23,800 lbs 10 800 kg
Hoist Unit — Hw 6 86 3 S (138 hp/103 kW) ³ 	7'-3" x 11'-0" x 4'-9" 2.22m x 3.35m x 1.46m	10,600 lbs 4 810 kg	Jib Assembly ⁴ 180-ft (55m) ①②③④⑤⑥	182'-1" x 5'-7" x 7'-3" 55.5m x 1.69m x 2.22m	22,000 lbs 10 000 kg
Operator Cab with Access Platform 	5'-5" x 3'-4" x 7'-1" 1.65m x 1.02m x 2.16m	1,000 lbs 455 kg	Jib Assembly ⁴ 164-ft (50m) ①②③④⑥	165'-8" x 5'-7" x 7'-3" 50.5m x 1.69m x 2.22m	20,500 lbs 9 300 kg
Trolley 	7'-3" x 6'-0" x 2'-11" 2.21m x 1.84m x 0.90m	750 lbs 340 kg	Jib Assembly ⁴ 148-ft (45m) ①②③④⑤	149'-2" x 5'-7" x 7'-3" 45.5m x 1.69m x 2.22m	19,800 lbs 8 980 kg
Hook Block 2/4-part Combination 	4'-2" x 0'-8" x 5'-2" 1.28m x 0.2m x 1.58m	1,500 lbs 680 kg	Jib Assembly ⁴ 131-ft (40m) ①②③④	132'-10" x 5'-7" x 7'-3" 40.5m x 1.69m x 2.22m	18,300 lbs 8 300 kg
Tower Section UV 20 	15'-10" x 6'-7" x 7'-4" 4.82m x 2.0m x 2.24m	4,300 lbs 1 950 kg	Jib Assembly ⁴ 115-ft (35m) ①②③⑦	116'-5" x 5'-7" x 7'-3" 35.5m x 1.69m x 2.22m	17,000 lbs 7 710 kg
Tower Section TV 20 	15'-11" x 6'-8" x 7'-4" 4.84m x 2.03m x 2.24m	6,600 lbs 3 000 kg	Jib Assembly ⁴ 98-ft (30m) ①②③	100'-0" x 5'-7" x 7'-3" 30.5m x 1.69m x 2.22m	15,200 lbs 6 895 kg
Transition Section TVA 20 	15'-10" x 6'-7" x 7'-4" 4.82m x 2.0m x 2.24m	6,800 lbs 3 085 kg	Top Climbing Unit KWH 20.2 	29'-6" x 9'-4" x 9'-4" 9.0m x 2.85m x 2.85m	14,740 lbs 6 685 kg
Counterweight Block A 	4'-8" x 2'-9" x 6'-2" 1.42m x 0.84m x 1.88m	12,130 lbs 5 500 kg	Top Climbing Unit KWH 20.5 	34'-7" x 8'-4" x 9'-0" 10.54m x 2.53m x 2.75m	23,485 lbs 10 650 kg
Counterweight Block B 	4'-8" x 1'-0" x 6'-2" 1.42m x 0.3m x 1.88m	4,410 lbs 2 000 kg	Undercarriage UW 260.2 	21'-1" x 26'-0" x 16'-2" 6.42m x 7.93m x 4.93m	30,700 lbs 13 930 kg
Counterweight Block C 	4'-8" x 10" x 3'-9" 1.42m x 0.25m x 1.14m	2,205 lbs 1 000 kg	Undercarriage UW 260.3 	21'-1" x 26'-0" x 16'-2" 6.42m x 7.93m x 4.93m	37,800 lbs 17 190 kg
Counterweight Fixed Block 	6'-7" x 4'-8" x 11" 2.0m x 1.42m x 0.28m	2,430 lbs 1 100 kg	Crossframe KRE 260.2 	19'-8" x 19'-8" x 14'-2" 6.0m x 6.0m x 4.32m	24,000 lbs 10 885 kg
Central Ballast Block A (for KRE/UW260.2, UW260.3) 	12'-6" x 1'-8" x 5'-2" 3.8m x 0.5m x 1.57m	11,025 lbs 5 000 kg	Central Ballast Block B (for KRE/UW260.2, UW260.3) 	12'-6" x 10" x 5'-2" 3.8m x 0.25m x 1.57m	5,512 lbs 2 500 kg

¹ Upper turntable includes race bearing, gearboxes and motors.
² Does not include race bearing.

³ Does not include wire rope.
⁴ Jib assemblies include jib sections, pendants, trolley and trolley rope.



Morrow Equipment
 COMPANY, L. L. C.

3218 Pringle Road SE • P O Box 3306 • Salem, Oregon 97302-0306 USA
 Tel. 503.585.5721 • Fax. 503.363.1172 • www.morrowequipment.com

The American home of
LIEBHERR

Atlanta, GA • Charlotte, NC • Chicago, IL • Denver, CO • Honolulu, HI • Houston, TX • Los Angeles, CA • Las Vegas, NV
 Millwood, NY • St. Louis, MO • San Francisco, CA • Dallas, TX • Seattle, WA • Miami, FL • Tampa, FL • Washington, DC
 Sydney, Australia • Wellington, New Zealand • Vancouver, BC, Canada • Toronto, ON, Canada • México DF, México